

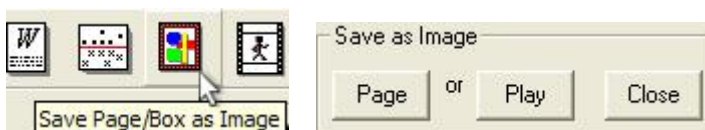
Coach's Office Pages & Plays to Hudle

(SlideShow required)

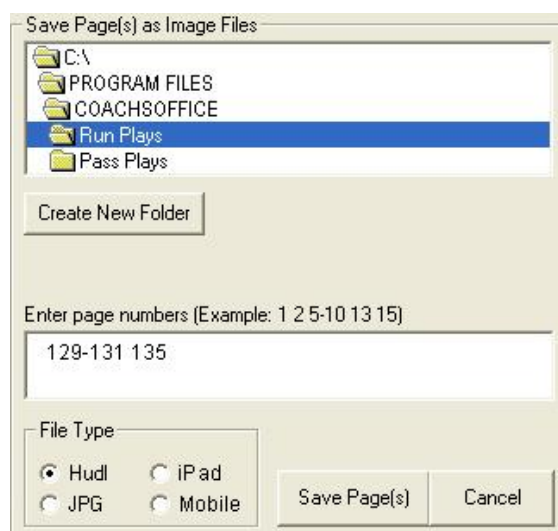
The Coach's Office slideshow program (add-on) activates a playbook feature named Application Compatible Images (ACI) to save entire pages and individual plays as images in a format to upload to Hudl Gold or Platinum.

Save Playbook Pages for Hudl Presentations

- Open Coach's Office playbook.
- Go to the page to be saved as a Hudl ACI.
- Click *Save Page/Box as Image*.
 - The *Save as Image* dialog box displays on the page.
- Click Page. The *Save Page(s) as Image Files* dialog box displays.



- Browse to the target location to save the page image.
- Enter the page number(s) and/or range, following the example format on the screen. Space between entries and add a hyphen to a page range.
- In the above example, the pages that will be saved are 129, 130, 131, 135.
- Click *Hudl* in File Type.
- The page images are saved.
 - The *Processing Page Number* dialog box displays the page numbers as they are saved.
- Upload images to Hudl.



Save Individual Playbook Plays for Hudl Presentations

To save individual plays, follow the instructions above for saving pages. When you get to the *Save Page/Box as Image* dialog box, the play name is displayed in gray.

- The play name displayed in gray is the offense, front, and coverage, separated by an underscore (_).

- Click *Save Play*. The play is saved as the displayed name.
- Select another play and then click the Save button. To save time when saving several plays, the program prompts you to select another play and then save it. (fig. 4) .
- Click *Cancel* when finished saving plays.
- Upload image(s) to Hudl. (See instructions below.)



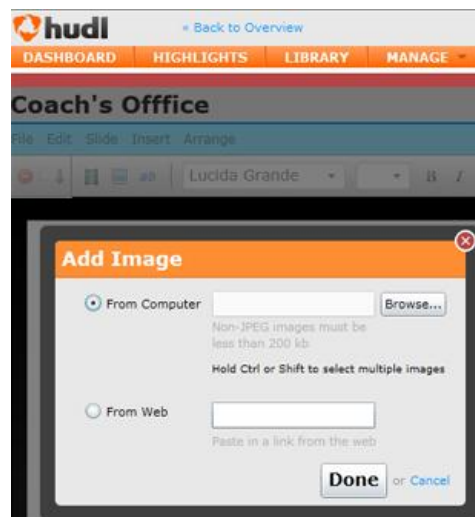
Upload to Hudl

Upload the saved play and page images to Hudl presentation. This process takes place outside of Coach's Office software.

- Log in to Hudl.
- Go to the Dashboard, Library, and choose to Edit your presentation.



- Add Image. Upload the playbook images according to the presentations instructions in Hudl.



- Select Coach's Office Playbook images to upload. These are the images (play and pages) that were saved in the examples above.
- Create Presentation per Hudl instructions.

